



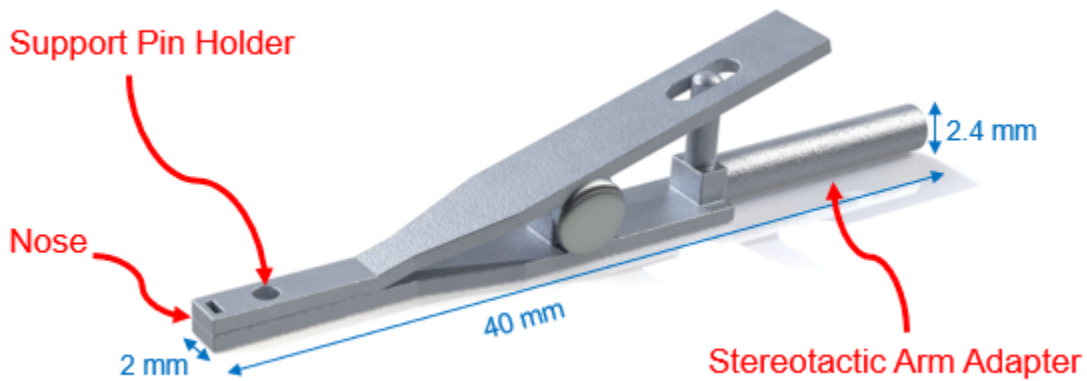
The NeuroLux Custom Stereotactic Implant Adapter (Surgical Clip) helps users perform surgery. Coupled with a strong grip, the additional tooth on the clip nose aligns the stereotactic arm adapter and the device probe.

**What you will need:**

- NeuroLux Custom Stereotactic Implant Adapter (1)
- NeuroLux device (1)
- Tweezers (2)
- Microscope (method 1) or magnifying glass (method 2)\* (1)

\*Although it is not required to use a microscope or magnifying glass, it is highly recommended to ensure proper alignment

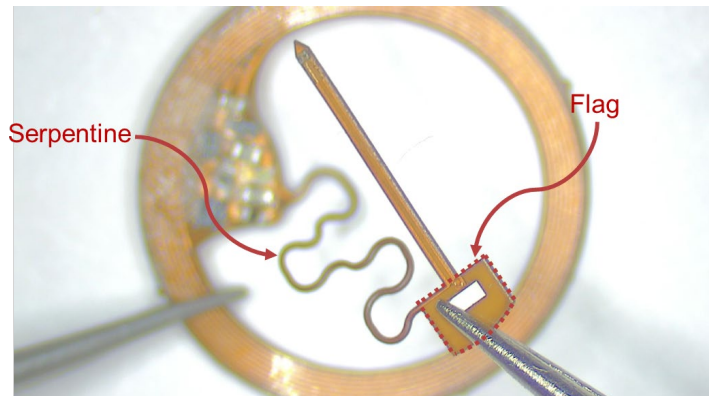
See the schematic below to get familiarized with the clip parts.



**How To Clip the Device**

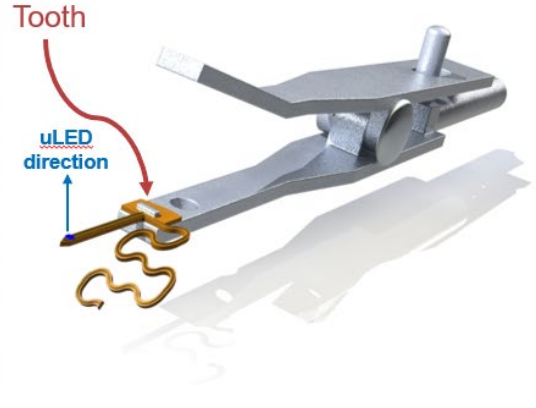
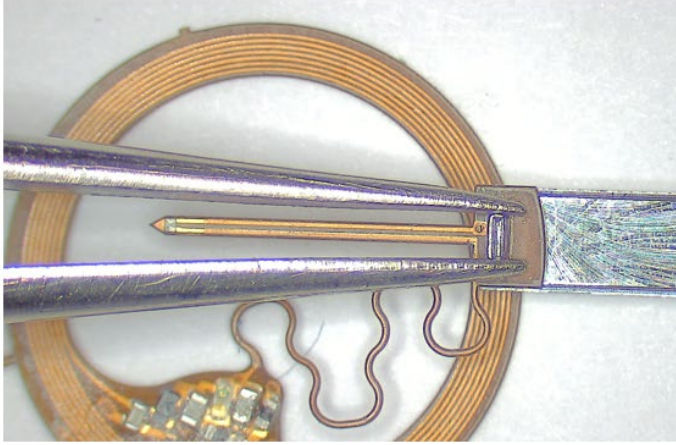
**Method 1: Free Hand under a Microscope**

1. Using one pair of the tweezers, hold the device in place.
2. Grab on the flag of the device with the other pair and extend the serpentine in the +z direction (towards you). Be careful not to bend the probe during the process. We recommend stretching the serpentine until it is plastically deformed (i.e. does not bounce back to its initial form) to allow for easier control.





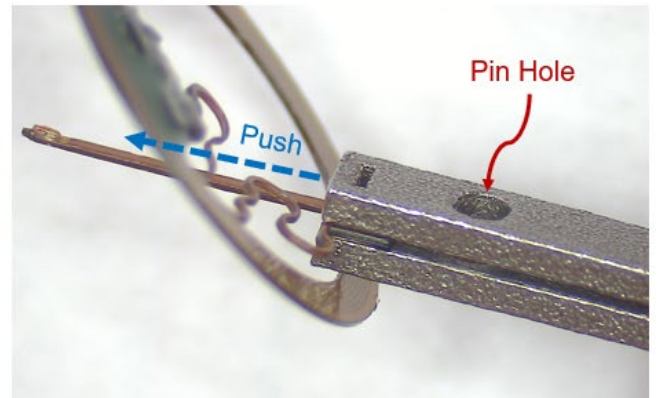
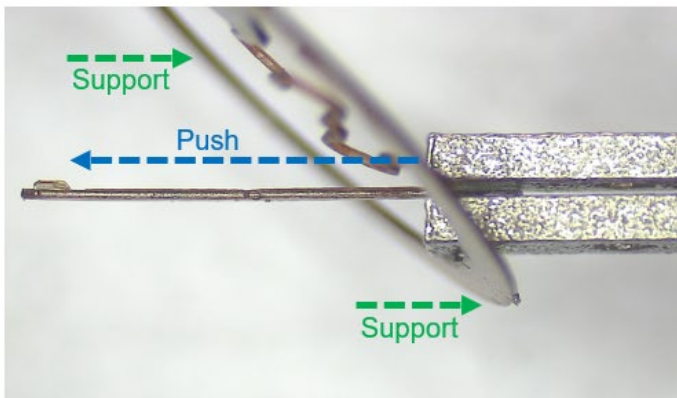
3. Open the surgical clip and align the hole on the flag to the clip tooth. When they are aligned, you will be able to insert the flag on the tooth.



4. Fasten the clip and double check to see whether the flag is tightly fixed.



5. Hold the clip sideways for a better view.
6. Push the clip towards the center of the coil until the support pin holder pass the other side of the device. Gently support the back side of the coil with your fingers during the process.



7. When properly positioned, the clipped device should look like the figure below. Insert the support pin to hold the coil in place; preventing the serpentine from bouncing back to its previous position.



8. Please see the picture below to see how the device will look like when it is properly attached to the surgical clip.



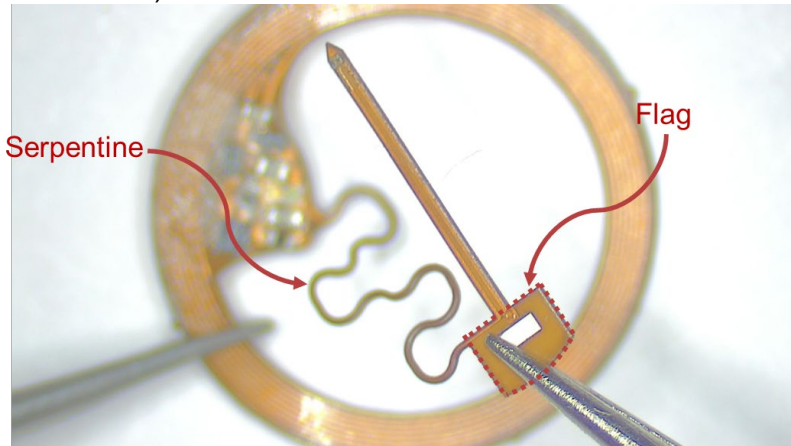
## Method 2: Stereotactic Assisted

1. Attach the surgical clip to the stereotactic adapter.

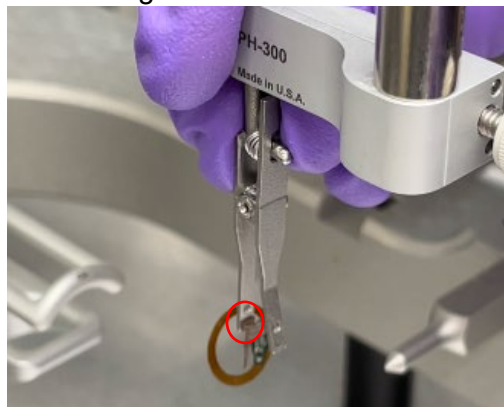




2. Using one pair of the tweezers, hold the device in place.
3. Grab on the flag of the device with the other pair and extend the serpentine in +z direction (towards you). Be careful not to bend the probe during the process. We recommend stretching the serpentine until it is plastically deformed (i.e. does not bounce back to its initial form) to allow for easier control.



4. Using a pair of tweezers again, guide the flag onto the tooth of the clip and secure it by closing the clip down on the flag.



5. Use the tweezers to pull up the coil to place the pin below it.



6. Please see below for a picture of the device properly attached to the surgical clip and stereotactic set up.

